

BEACON



Beacon Series 7" BLD

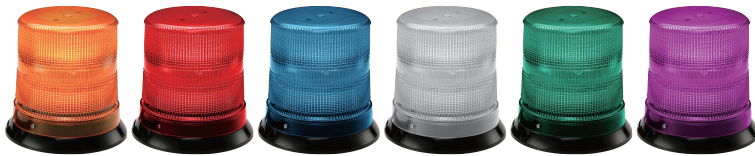


Feature

- Compliance : SAE J845 / CA T13
- Ingress Protection Rating : IP65
- LED : High Power LED 12 / 16
- Housing : Plastic
- Optional Accessories :
 - Permanent
 - Magnet mounting
 - Cig plug

Specification

- Model No : BLD
- Voltage : 10~30VDC
- Current : 2.0 A max @12.8VDC
- Synchronize : Maximum of 8 Beacons
- Function : Standard
- Flash Pattern : 30



Optional Accessories



Color Availability

- LED Color : R / B / A / C / G / M



Dimension

- \varnothing 5.15" (130.8mm) x H 6.91" (175.6mm)

